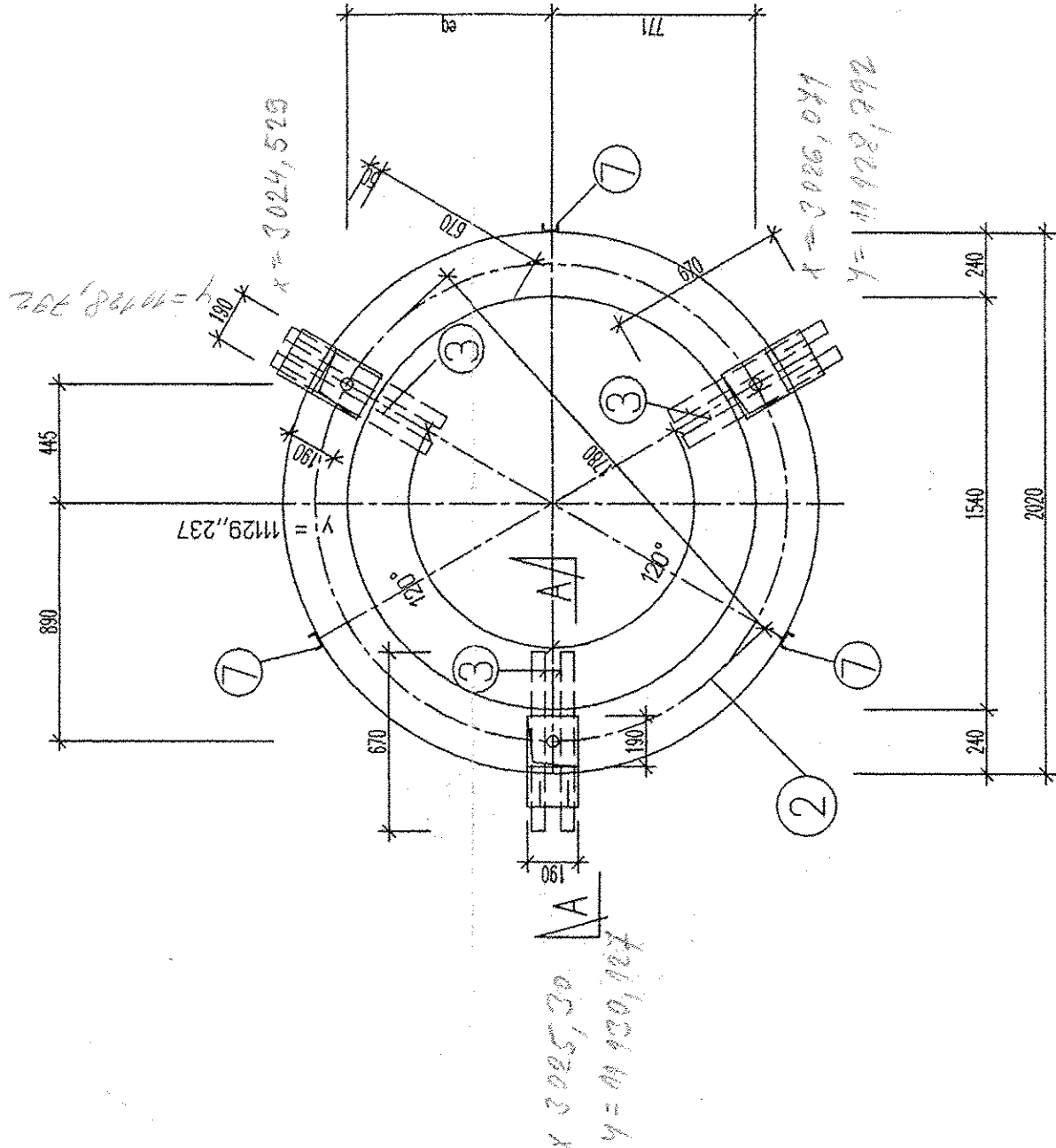


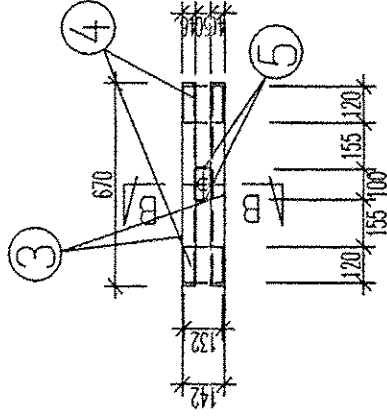
ŠABLONA ZR 4

TEMPLAATE ZR 4

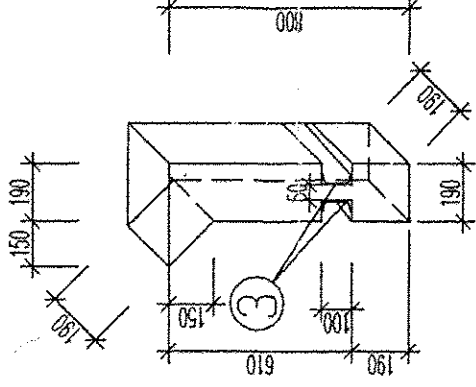


PÓDORYS ROŠTU

SECTION PLANE GRIDIRON

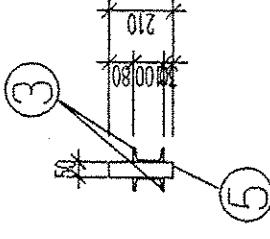


DETAIL POL.Č. ⑥



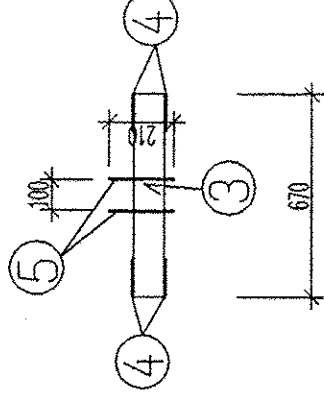
REZ B-B

SECTION B-B



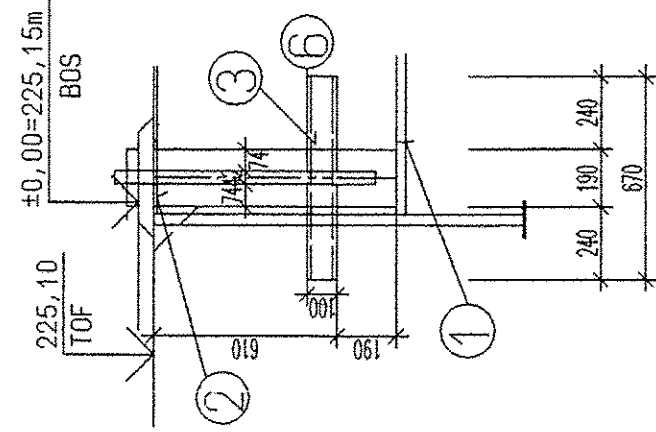
POHĽAD ČELNÝ NA ROŠT

LOOK FRONTAL ON GRIDIRON



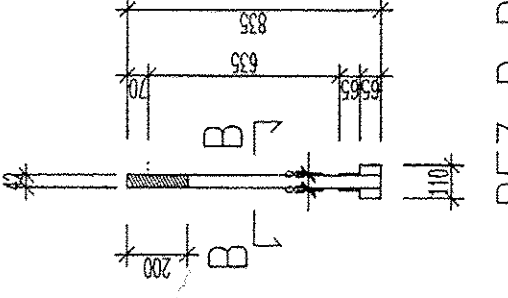
REZ A-A

SECTION A-A



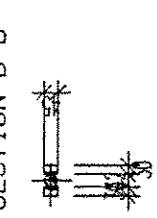
POL.Č. 9

KOTENÁ SKRUTKA
S KOTENOU HLAVOU T



REZ B-B

SECTION B-B



VÝKAZ MATERIÁLU :

MATERIAL SPECIFICATION

POL.ČKA C.	PROFIL	POČET KUSOV	DĚŽKA KS/MM	DĚŽKA CELKOM/MM	HMOTNOST KG/M	HMOTNOST SPOLU/KG
1	PLECH 240x20 mm	1	5589,2	5589,2	37,88	210,59
2	PLECH 240x10 mm	1	5589,2	5589,2	15,7	87,74
3	UŠ. 100 /ON 732615/	6	670	4020	8,59	34,53
4	Φ PLECH 120x8	12	132	1584	7,54	11,94
5	Φ PLECH 50x6	6	210	1260	2,36	2,97
6	Φ PLECH 190x190x3	3	800	r.s. 672,6		38,0
7	UŠ. 85	3	1200	3600	5,9	21,24
8	Φ PLECH 120x8	3	120	360	7,54	2,71
9	Ø42 mm OCE11375	3	835	2505	10,9	27,79
10	MATICA M42	6				3,72
HMOTNOST SPOLU V KG						546,4



LEVELS

TOP OF INTERNAL ROADS: 225,00n.m.

HORNÁ ÚROVEŇ VNUTORNÝCH CIEST 225.00n.m.

TOP OF FOUNDATION: 225,10m

HORNÁ ÚROVEŇ ZÁKLADOV 225,10m

BOTTOM OF STEEL STRUCTURE: 225,15m=±0,00

SPODNÁ ÚROVEŇ OK:225,15m=±0,00

FREIGABE
FOR CONSTRUCTION

Re 27.04.05

±0,000=225,15 m n.m. Jadran

PROJEKT PRE REALIZACIU STAVBY SPRACOVANÝ POD Z.Č.3821.2.003.AS-07

HPK
engineering a.s.

AIR LIQUIDE

Replaces: 79_-----
Replaced by: 79_-----

Job code: K700101
Reference: ASU No. 9 KOŠICE

Title: UNIT 7- FRONT END
SO 003 PRIPRAVA VZDUCHU
003 AIR PREPARATION

DETAIL ŠABLONY ZR4/DETAIL TEMPLATE ZR4/

ING. PAVLIČKO
Checked:

ING. PAVLIČKO
Checked:

Name :

Scale
1:25

Sheet: 008
of 010 Sheets

Drawing No.:
792.87456

Original format
DIN A2

Rev.:

B